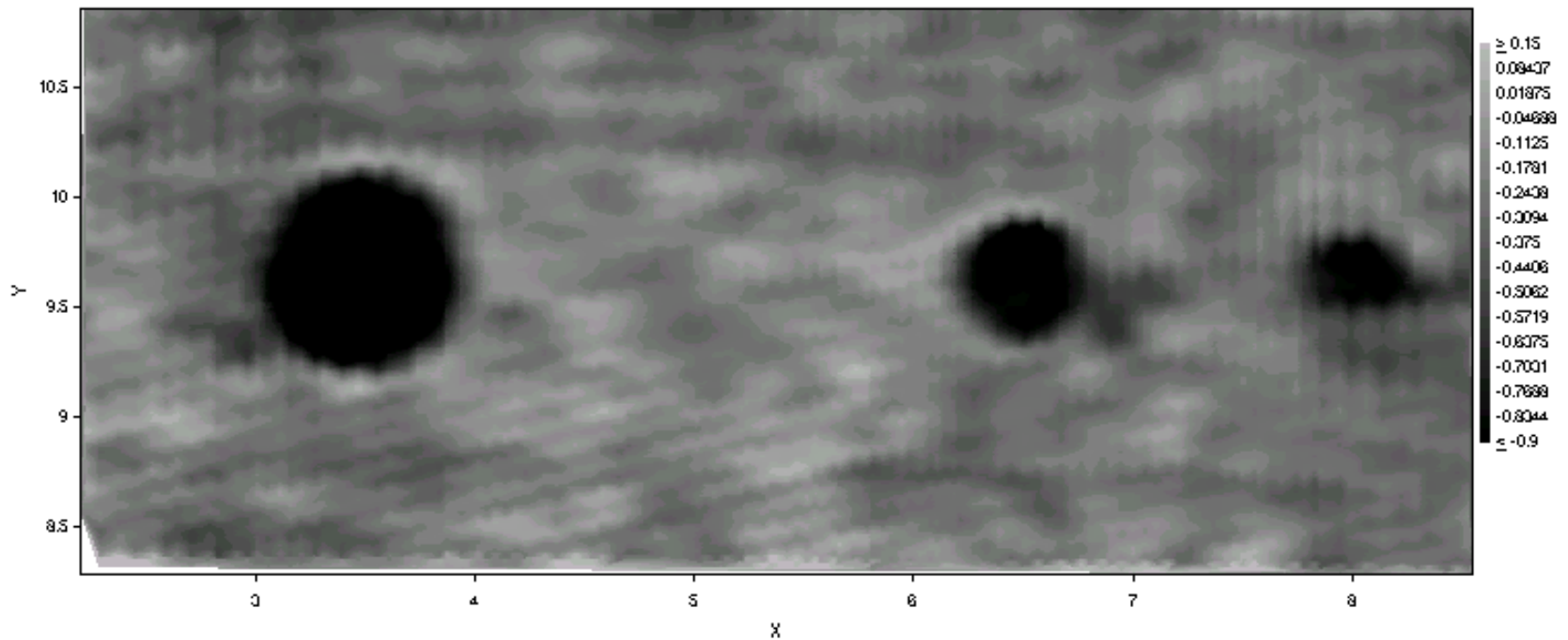


Modern Ceramic Structure Imaging Using Evisive Scan™ Technology

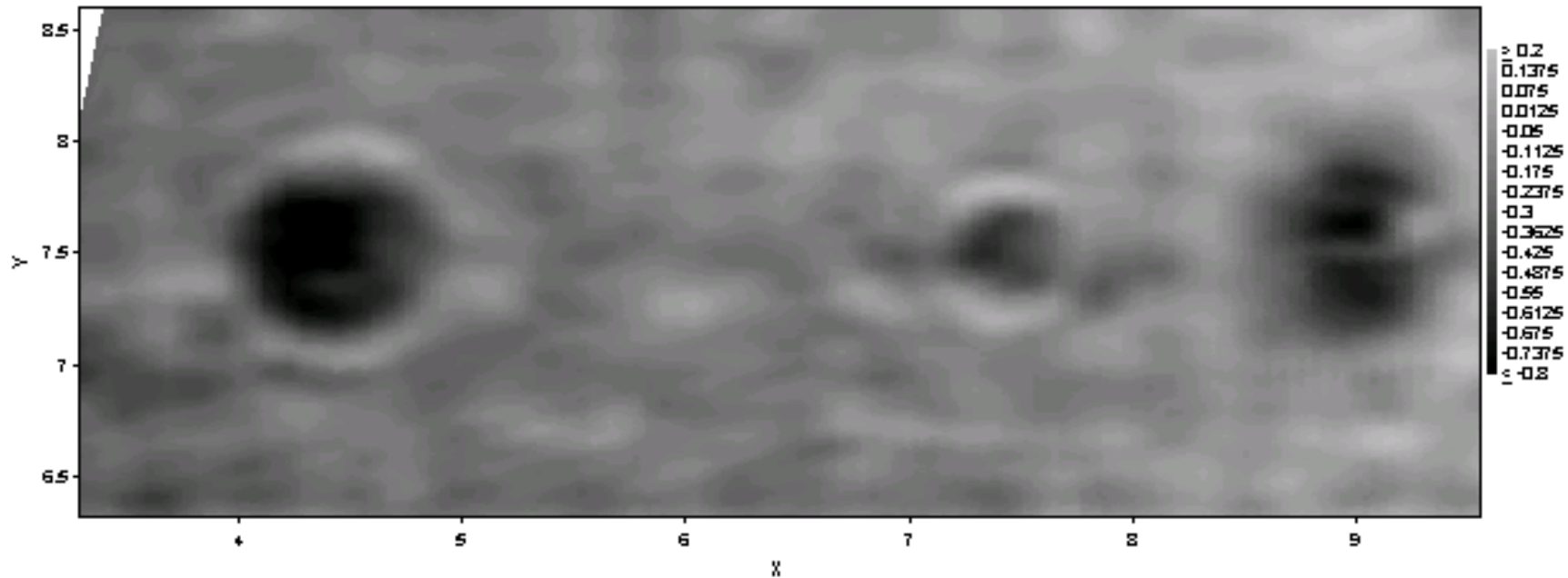


SiC/SiN CMC NDE Coupon Scan



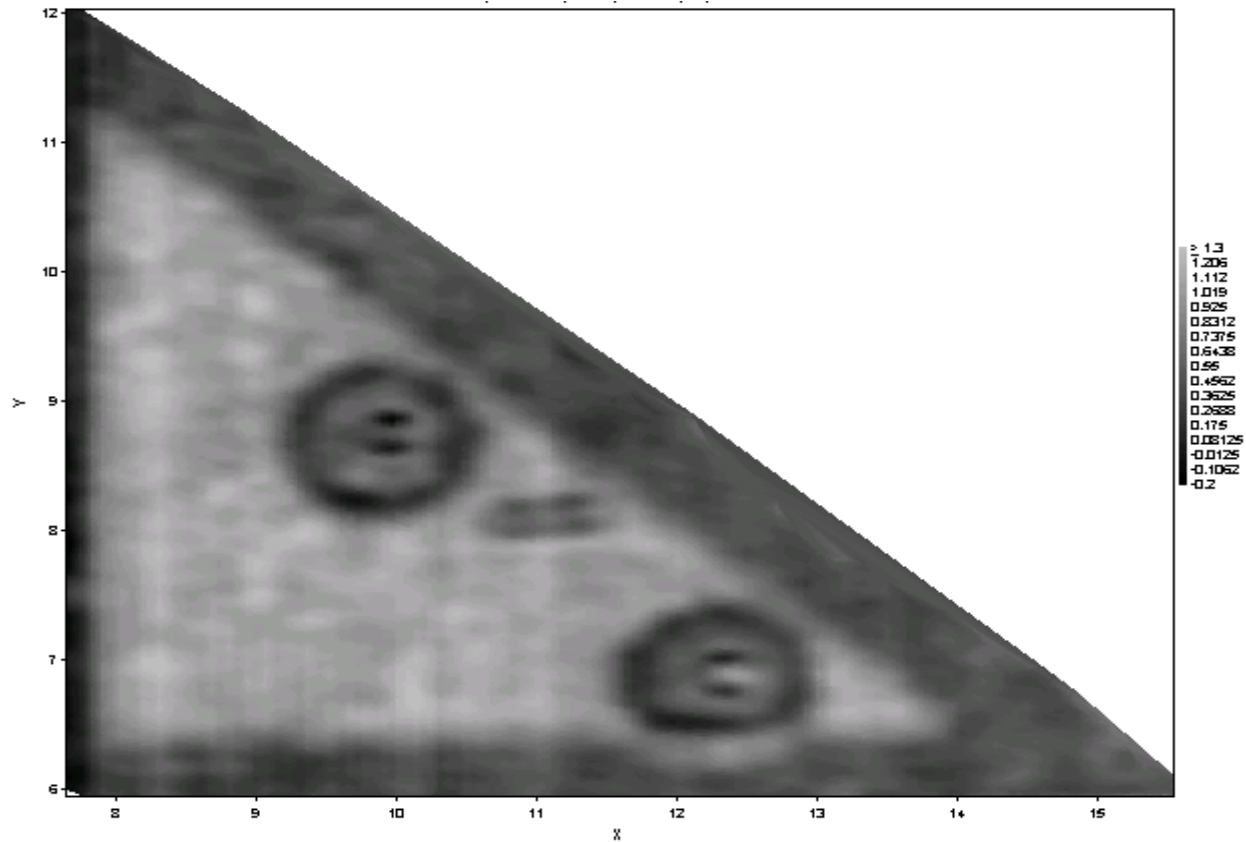
3" x 6" Ceramic Matrix Composite With 3 Intentionally Introduced Defects

SiC/SiN CMC NDE Coupon Scan



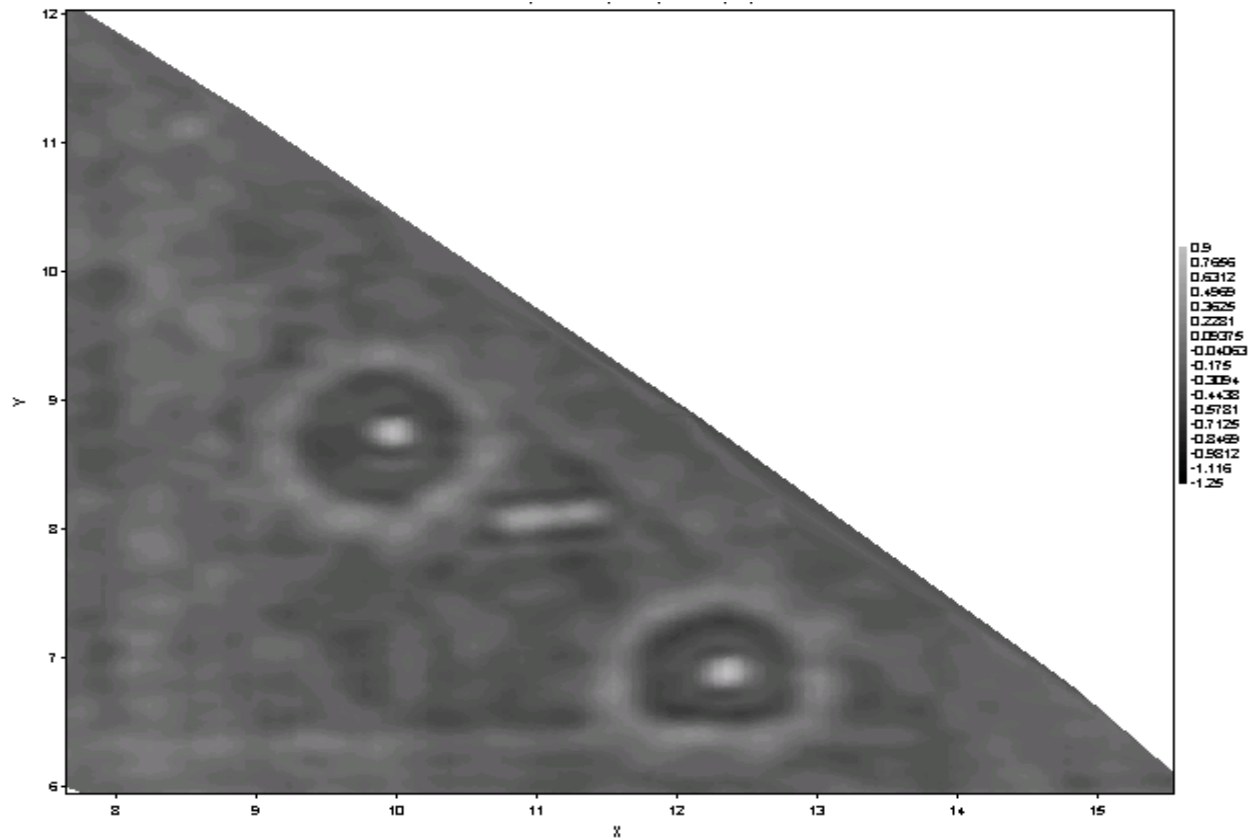
3" x 6" Ceramic Matrix Composite With 3 Intentionally Introduced Defects.
Note that the right-most defect is larger in this image, because the inspection has been optimized for a different depth in the specimen.

SiC/SiN CMC Coupon Scan



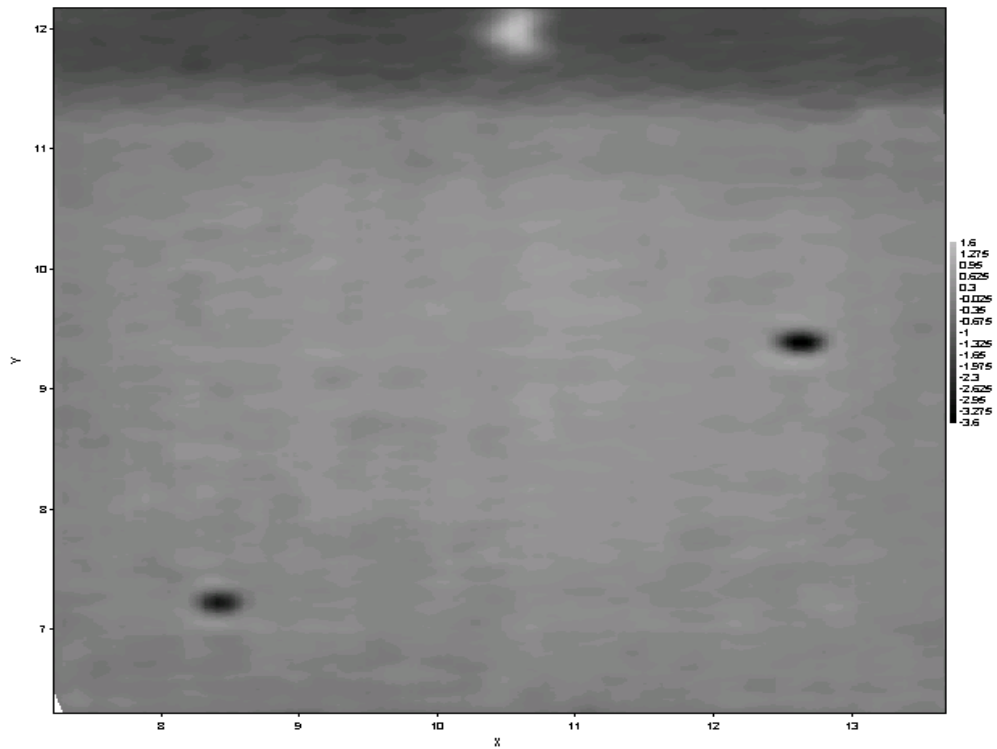
Triangular Ceramic Matrix Composite Fabrication

SiC/SiN CMC Coupon Scan



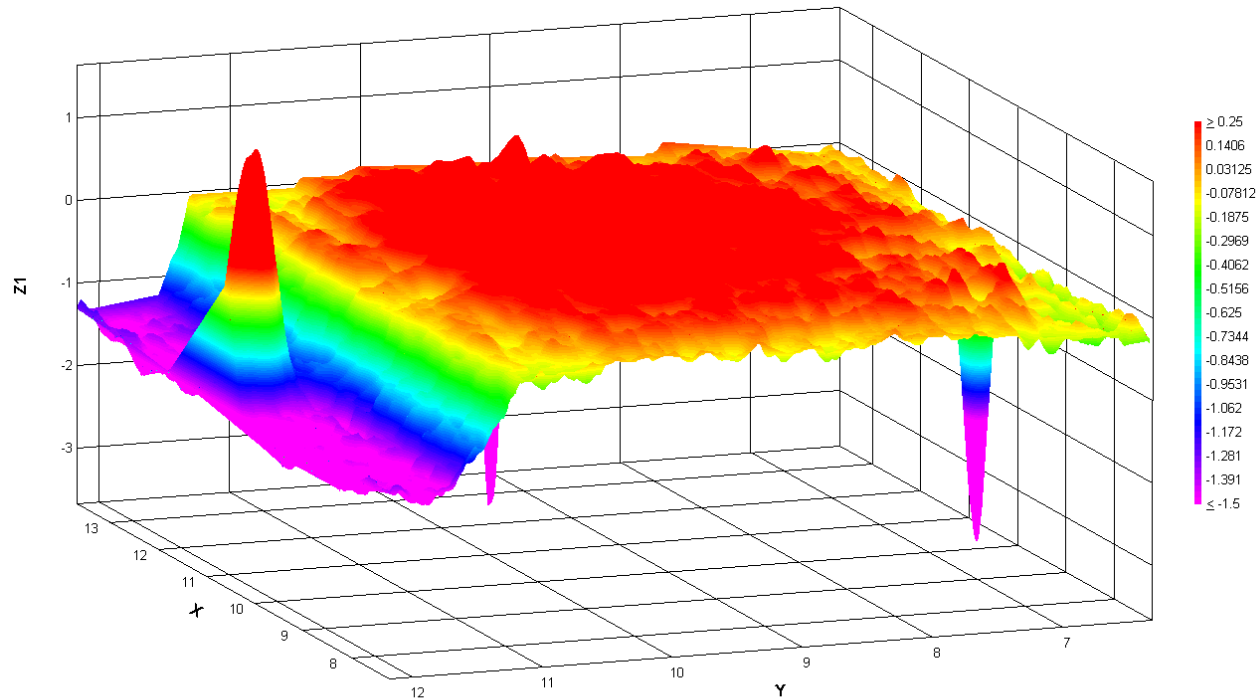
Triangular Ceramic Matrix Composite Fabrication

“Green” SiC/SiN CMC Coupon



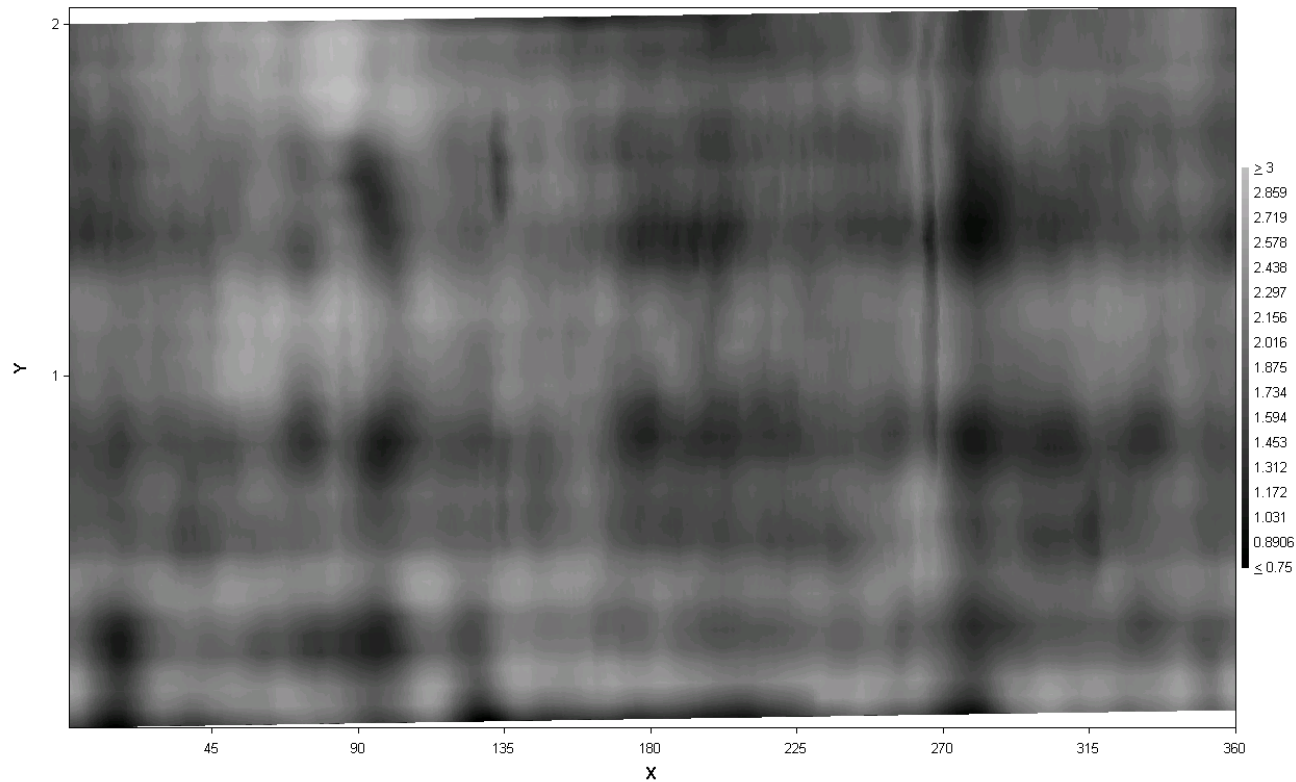
Note the 3 Foil Markers, 2 in the thin region and 1 in the thick region

“Green” SiC/SiN CMC Coupon



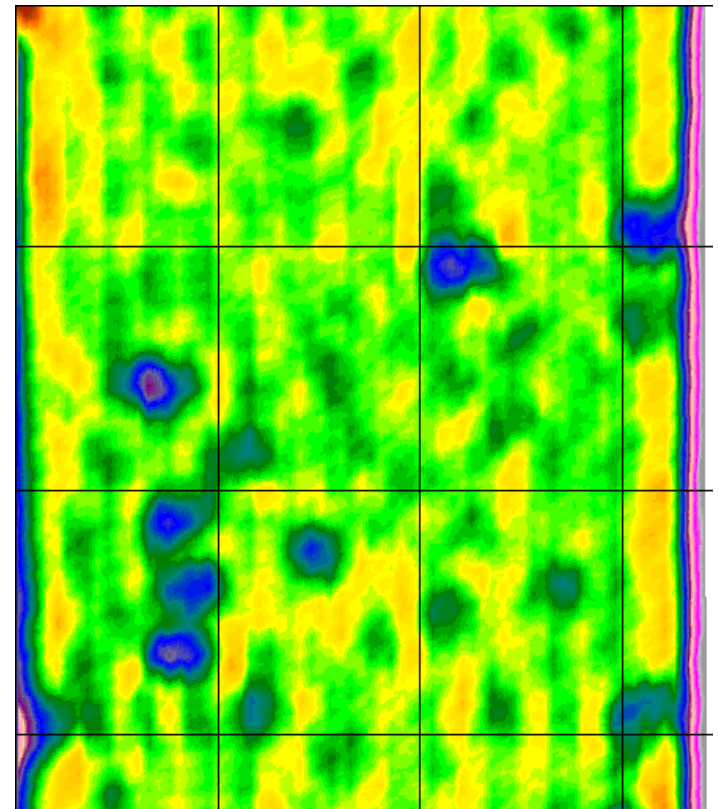
The 3 Foil Markers are still clearly visible in this perspective view

Cylindrical Oxide-Oxide CMC Coupon



Note the detail of internal structure available

Cylindrical Oxide-Oxide CMC Combustion Chamber Liner



Note the crack in the lower left of the photograph, and its close correlation to the detected sub-surface porosity.



Defense and Aerospace Applications

Advanced materials require advanced NDE methods.

Let Evisive, Inc. help you push your envelope.

